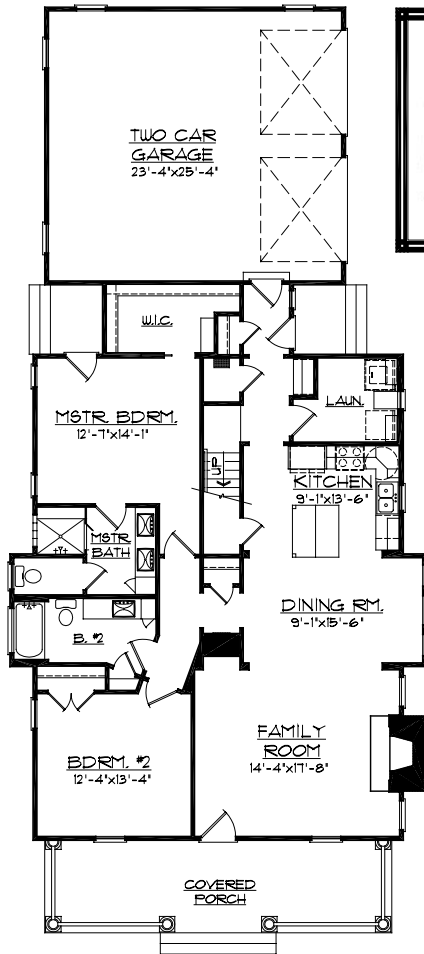
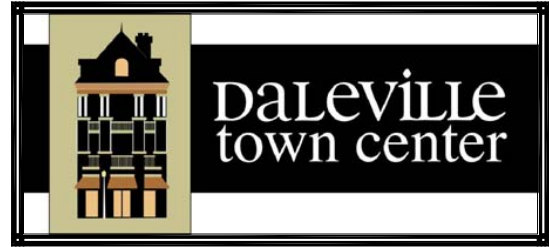
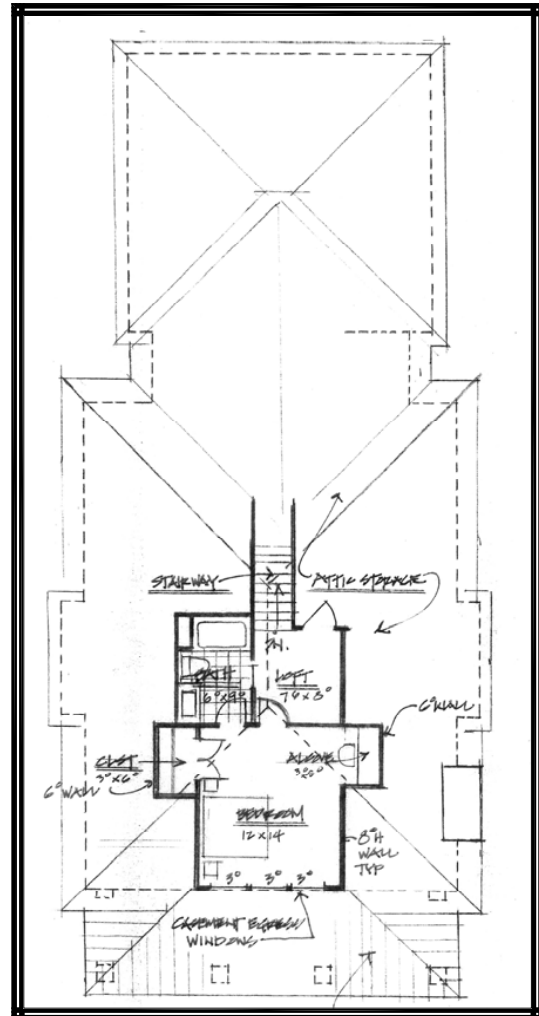




"HONEY CRISP HOUSE"
"FOUR SQUARE STYLE"



FIRST FLOOR PLAN



SECOND FLOOR PLAN

1st. FLOOR:	1488 SQ. FT.
2nd. FLOOR:	375± SQ. FT.
OUTDOOR:	272 SQ. FT.
LIVING TOTAL:	2135± SQ. FT.
GARAGE:	619 SQ. FT.

PLANS AND ELEVATIONS SHOWN ARE A GRAPHIC INTERPRETATION AND ARE SUBJECT TO CHANGE WITHOUT NOTICE.

CONSULT BUILDERS PLANS FOR ACTUAL CONSTRUCTION DETAILS AND SIZES.



WALDRON HOMES
90 TOWN CENTER STREET, SUITE 200
DALEVILLE, VIRGINIA 24083
WWW.DALEVILLETOWNCENTER.COM
TELEPHONE 540-266-3722