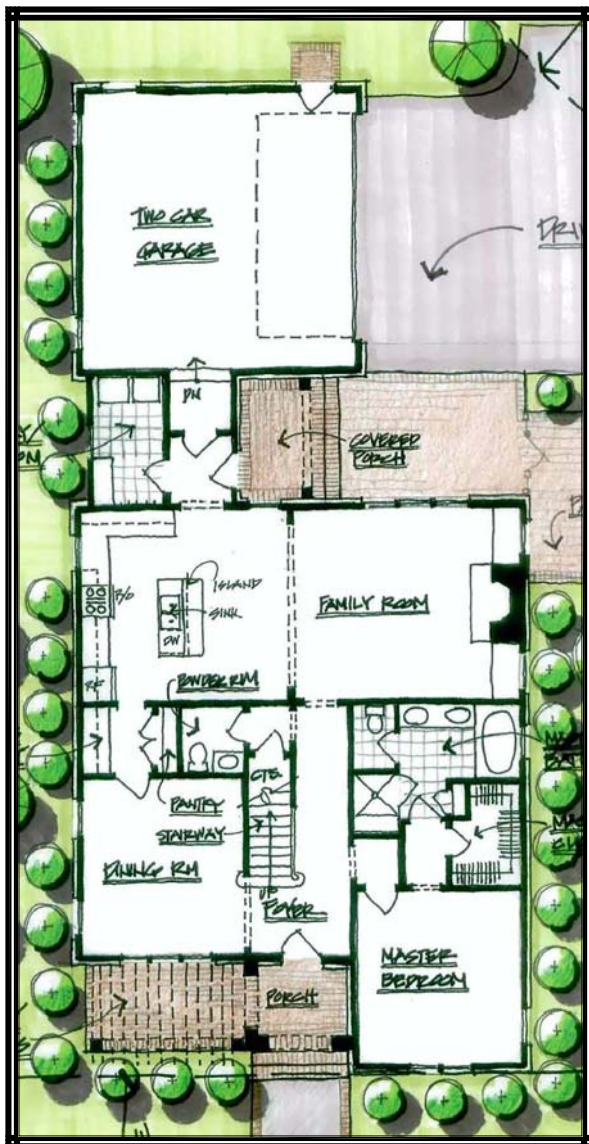




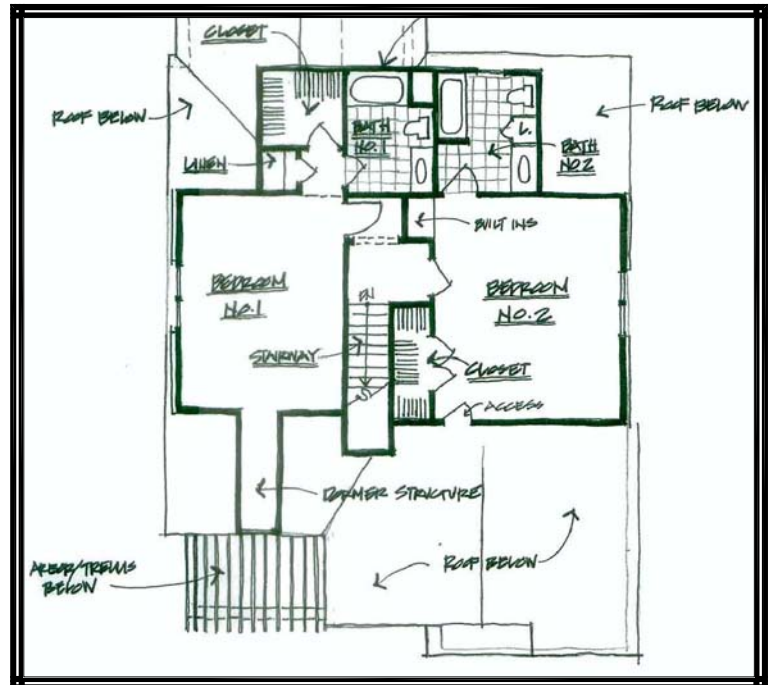
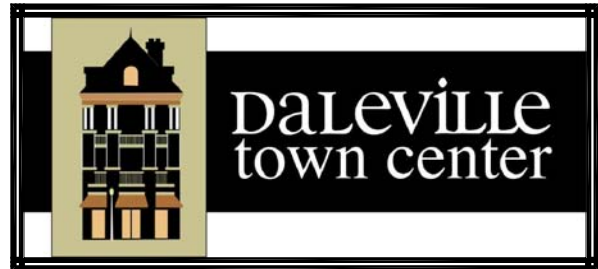
MASTER BEDROOM	12'-9" x 13'-6"
DINING ROOM	12'-6" x 13'-10"
FAMILY ROOM	17'-7" x 15'-0"
KITCHEN	16'-1" x 15'-0"
LAUNDRY ROOM	5'-3" x 10'-1"
GARAGE	21'-6" x 21'-9"
BEDROOM #1	12'-9" x 16'-7"
BEDROOM #2	14'-7" x 17'-4"
BATH #1	6'-7" x 9'-2"
BATH #2	7'-7" x 9'-2"

## "IVY PLACE"

"EUROPEAN ROMANTIC STYLE"



FIRST FLOOR PLAN



SECOND FLOOR PLAN

1st. FLOOR:	1460± SQ. FT.
2nd. FLOOR:	890± SQ. FT.
LIVING TOTAL:	2350± SQ. FT.
GARAGE:	515± SQ. FT.

\* PLANS AND ELEVATIONS SHOWN ARE A GRAPHIC INTERPRETATION AND ARE SUBJECT TO CHANGE WITHOUT NOTICE.

\* CONSULT BUILDERS PLANS FOR ACTUAL CONSTRUCTION DETAILS AND SIZES.



WALDRON HOMES

90 TOWN CENTER STREET, SUITE 200

DALEVILLE, VIRGINIA 24083

WWW.DALEVILLETOWNCENTER.COM

TELEPHONE 540-266-1372