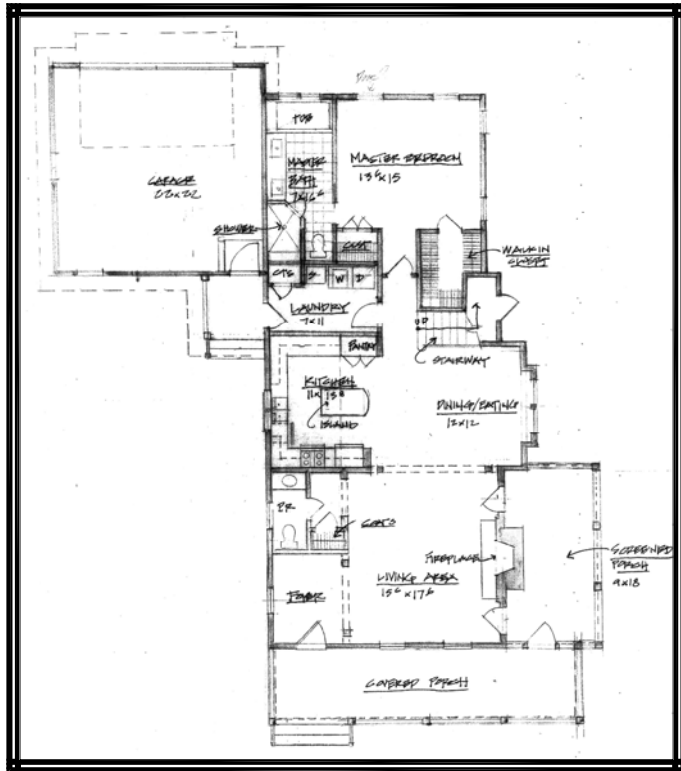
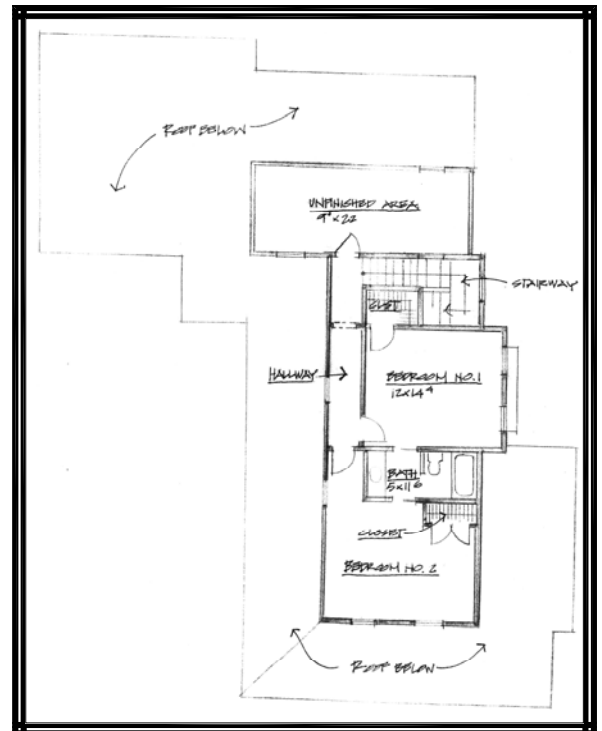




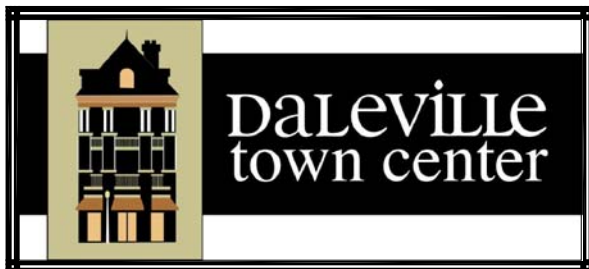
"PLUM CREEK HOMESTEAD"
"FARMHOUSE STYLE"



FIRST FLOOR PLAN



SECOND FLOOR PLAN



1st. FLOOR:	1485± SQ. FT.
2nd. FLOOR:	690± SQ. FT.
OUTDOOR:	442± SQ. FT.
LIVING TOTAL:	2617± SQ. FT.
GARAGE:	500± SQ. FT.
UNFIN. 2nd. FL.	220± SQ. FT.

• PLANS AND ELEVATIONS SHOWN ARE A GRAPHIC INTERPRETATION AND ARE SUBJECT TO CHANGE WITHOUT NOTICE.

• CONSULT BUILDERS PLANS FOR ACTUAL CONSTRUCTION DETAILS AND SIZES.



WALDRON HOMES
90 TOWN CENTER STREET, SUITE 200
DALEVILLE, VIRGINIA 24083
WWW.DALEVILLETOWNCENTER.COM TELEPHONE 540-266-1322