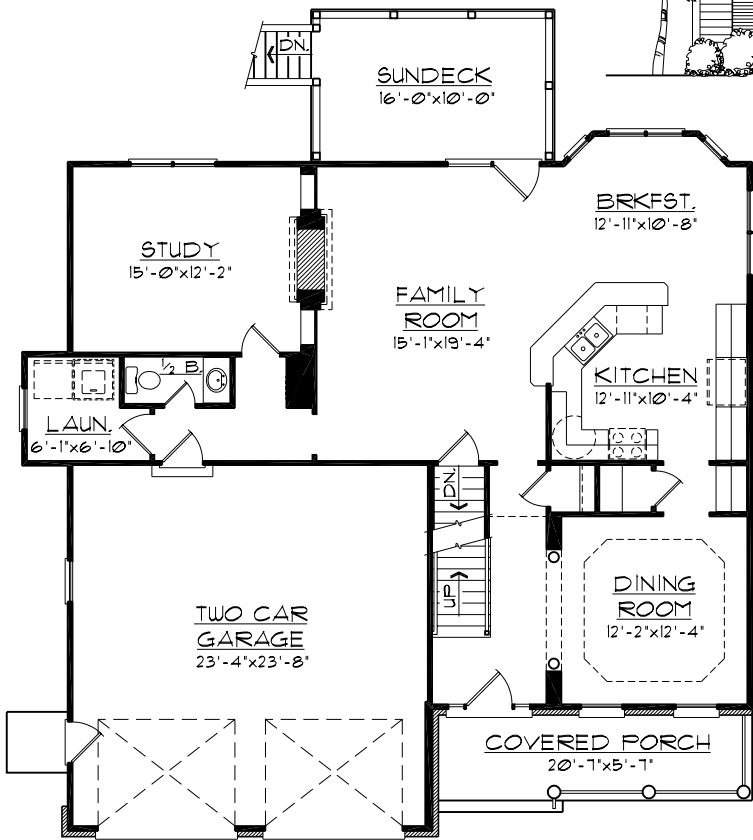


"THE BRIGHTON"  
 "MODERN COLONIAL STYLE"

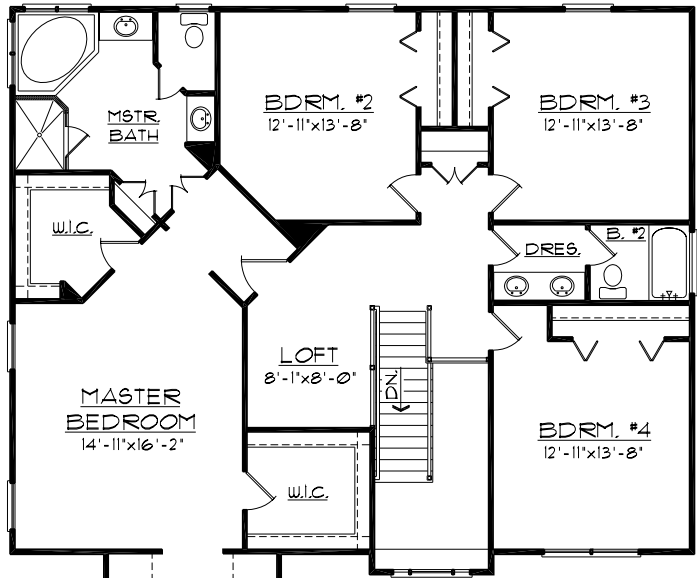


FRONT ELEVATION

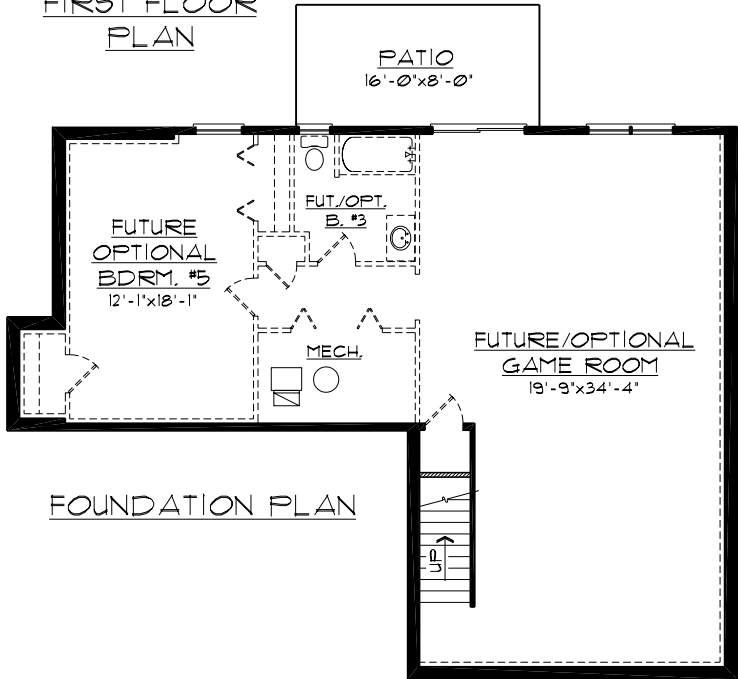
\* PLANS AND ELEVATIONS SHOWN ARE A GRAPHIC INTERPRETATION AND ARE SUBJECT TO CHANGE WITHOUT NOTICE.  
 \* CONSULT BUILDERS PLANS FOR ACTUAL CONSTRUCTION DETAILS AND SIZES.



FIRST FLOOR PLAN

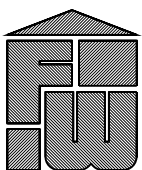


SECOND FLOOR PLAN



FOUNDATION PLAN

1st. FLOOR:	1281 SQ. FT.
2nd. FLOOR:	1724 SQ. FT.
LIVING TOTAL:	3005 SQ. FT.
BASEMENT:	1179 SQ. FT.
GARAGE:	572 SQ. FT.



FRALIN and WALDRON, INC.  
 ROANOKE, VIRGINIA

4 BDRM. TWO-STORY, ON BSMT.  
 4846-TS