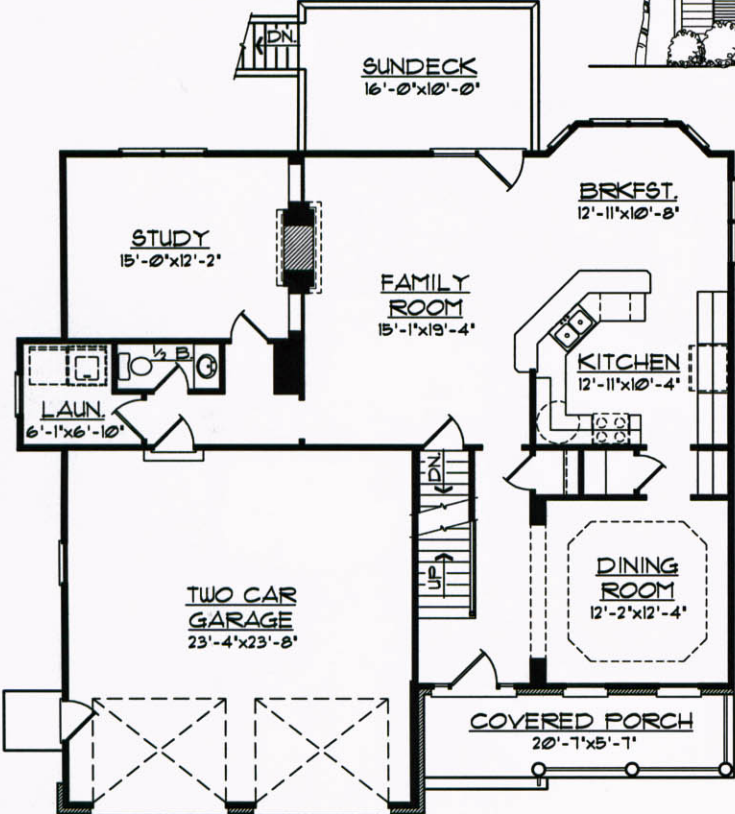


"THE BRIGHTON"

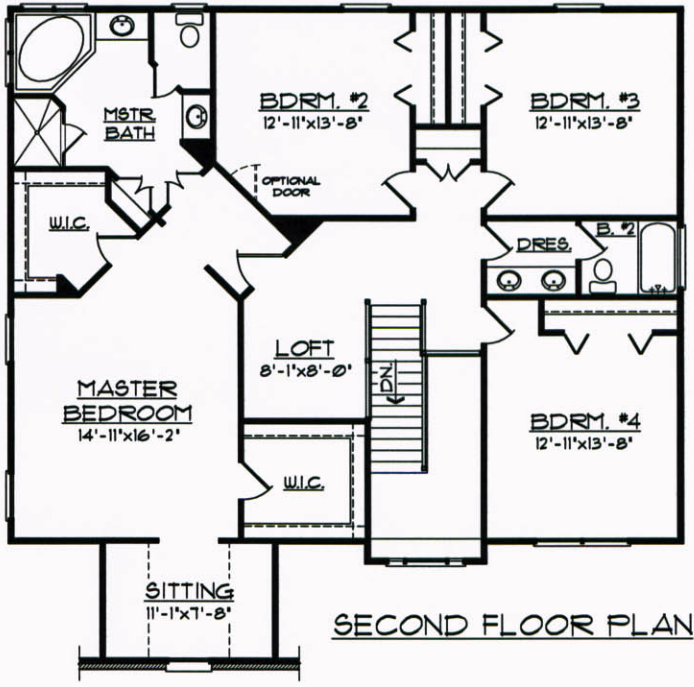
• PLANS AND ELEVATIONS SHOWN ARE A GRAPHIC INTERPRETATION AND ARE SUBJECT TO CHANGE WITHOUT NOTICE.
 • CONSULT BUILDERS PLANS FOR ACTUAL CONSTRUCTION DETAILS AND SIZES.



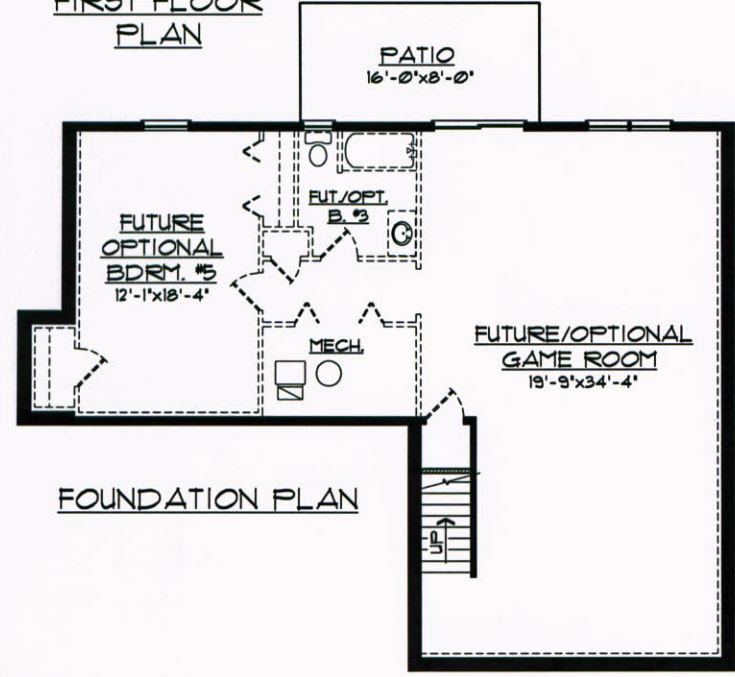
FRONT ELEVATION



FIRST FLOOR PLAN



SECOND FLOOR PLAN



FOUNDATION PLAN

09-01-01 WISTERIA PLACE
 PROCESSED: 11-14-05

1st. FLOOR:	1281 SQ. FT.
2nd. FLOOR:	1724 SQ. FT.
LIVING TOTAL:	3005 SQ. FT.
BASEMENT:	1185 SQ. FT.
GARAGE:	572 SQ. FT.



WALDRON HOMES
 ROANOKE, VIRGINIA
 4 BDRM. TWO-STORY, ON BSM'T.
 4846-TS