

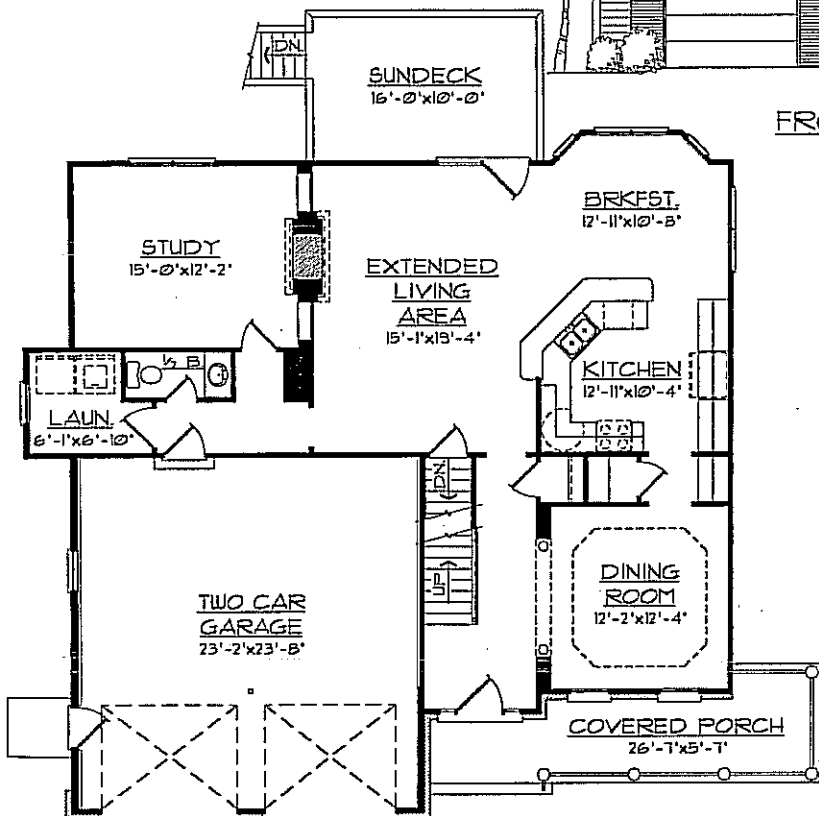
"THE BRIGHTON"

"ELEVATION #2"

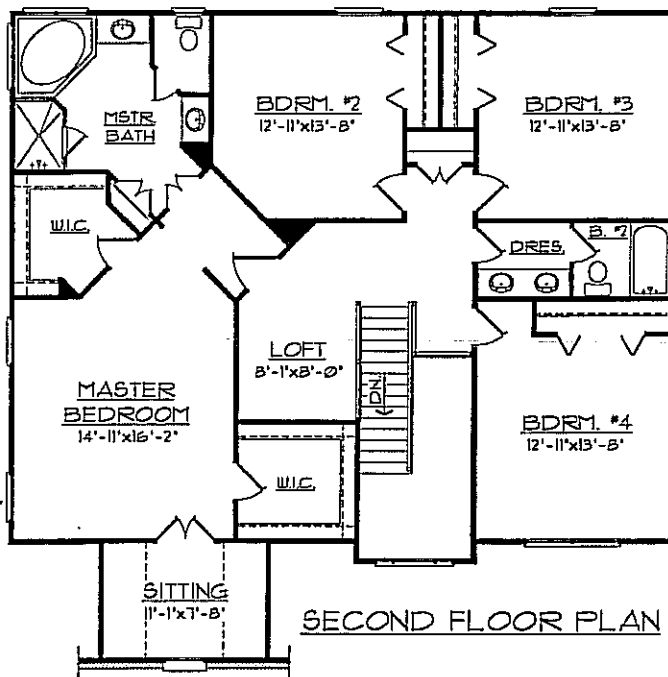
PLANS AND ELEVATIONS SHOWN ARE A GRAPHIC INTERPRETATION AND ARE SUBJECT TO CHANGE WITHOUT NOTICE.
 CONSULT BUILDERS PLANS FOR ACTUAL CONSTRUCTION DETAILS AND SIZES.



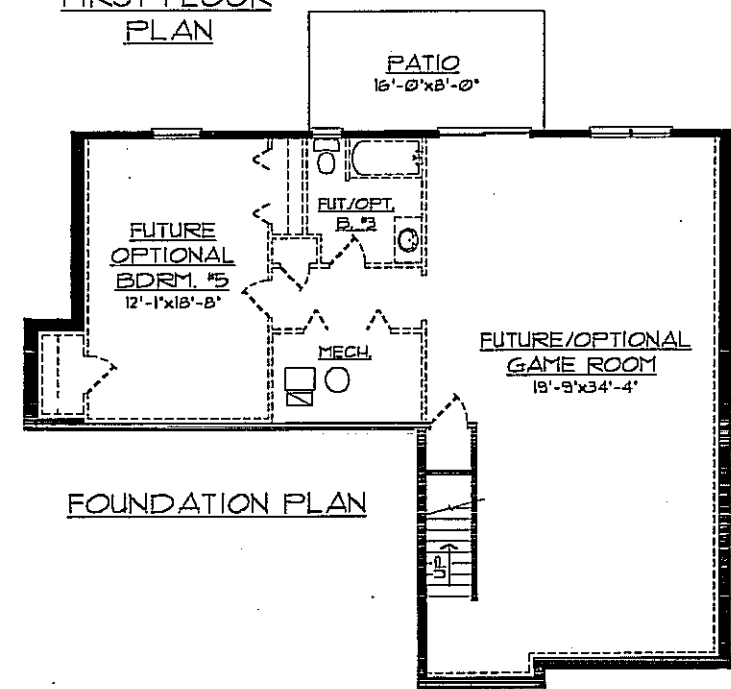
FRONT ELEVATION



FIRST FLOOR PLAN



SECOND FLOOR PLAN



FOUNDATION PLAN

05-01-01 WISTERIA PLACE
 PROCESSED: 11-14-06

1st. FLOOR:	1292 SQ. FT.
2nd. FLOOR:	1724 SQ. FT.
LIVING TOTAL:	3016 SQ. FT.
BASEMENT:	1195 SQ. FT.
GARAGE:	571 SQ. FT.



WALDRON HOMES
 ROANOKE, VIRGINIA

4 BDRM. TWO-STORY, ON BSM'T.
 4846-TS